



Through connection block type BPP2- ZR for rated voltage 500V



Through connection block type BPP2-ZR is a device designed for use in underground mining pits in non-explosive coal dust conditions and on the ground.

Through connection block type BPP2-ZR is designed for connecting and distributing power in mine d three-phase grid with isolated star point transformer (IT system) for rated grid voltage of 500V.

Wires are connected to the block via clamps through cable glands.

TECHNICAL DATA:

ingress protection	IP54
insulation rated voltage of main circuits	660 V
rated power supply voltage	3x500V,50Hz,IT grid
rated current of the main outlet	315 A
rated current of the auxiliary outlet	160A
number of outlets	4
dimensions	800 x 900 x 400mm (H x W x D)
weight	90 kg

CONSTRUCTION

The through connection block is composed of a housing mounted on a frame construction, equipped with brackets. The frame construction allows the device to be hung on the pit wall.

MODE OF OPERATION

Through connection block type BPP2-ZR is designed for connecting and switching the main power supply or the reserve on to the outlets: main outlet 1 and auxiliary outlet 1 and main outlet 2 and auxiliary outlet 2.

A mechanical lock was used between switches Q1 and Q2 to prevent at the same time turning on of two main outlets 1,2 and two auxiliary outlets 1,2.

Presence of supply voltage and on the outlets is indicated by the lighting lamps on the face of the block.

SCHEMATIC DIAGRAM

Legend:

Odplyw – outlet

Odplyw podstawowy 1,2 – main outlet 1,2

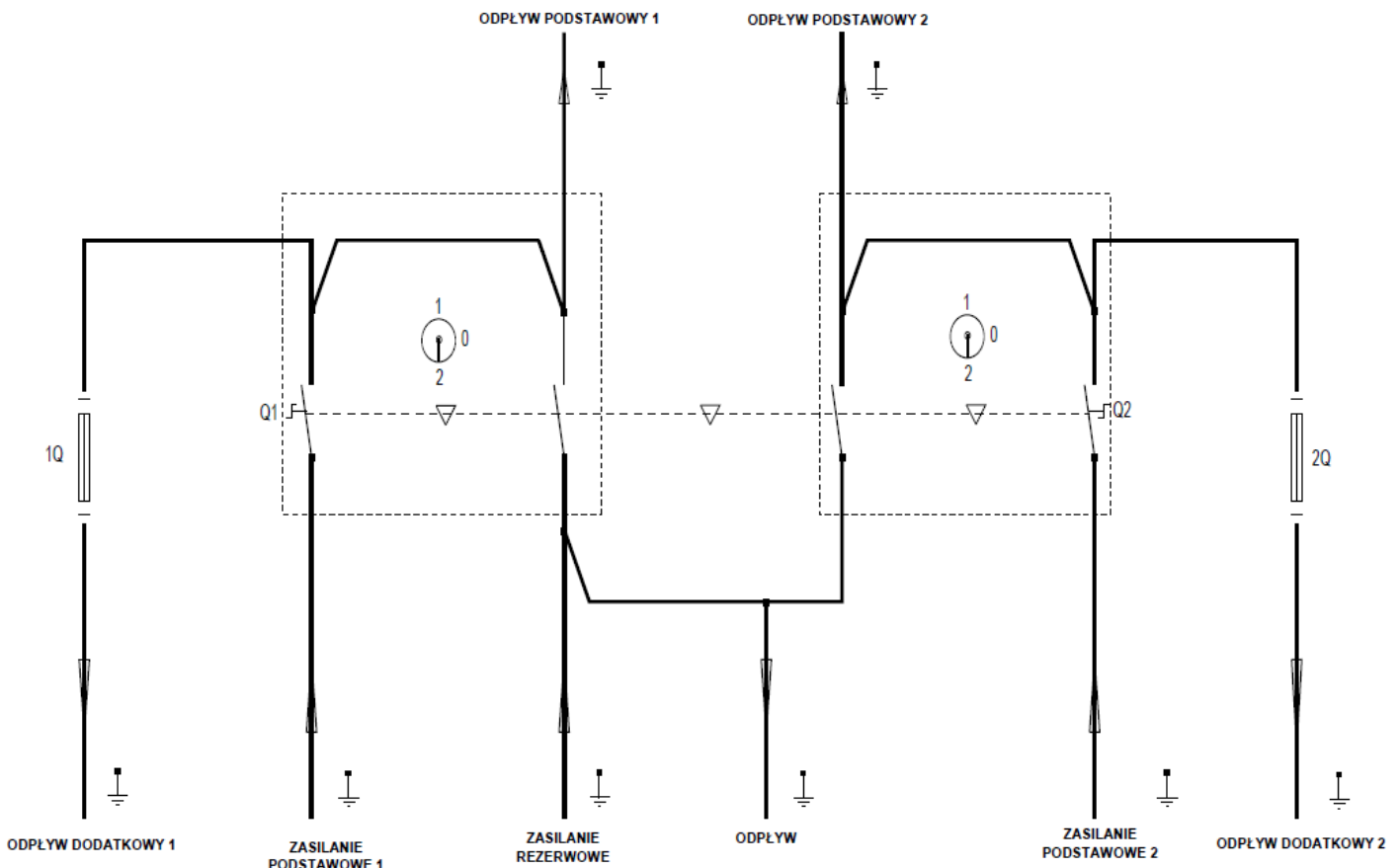
Odplyw dodatkowy 1,2 – auxiliary outlet 1,2

Zasilanie podstawowe 1,2 – main supply 1,2

Zasilanie rezerwowe – reserve supply

Q1, Q2 – switch disconnecter

1Q,2Q - fuses



Orders should be submitted in writing or by fax to the address:

 **Instal-Service PL**

Spółka z ograniczoną odpowiedzialnością
Spółka komandytowa

58-506 Jelenia Góra, ul. Wrocławska 15a
tel. (+48 075) 64-57-950
fax. (+48 075) 64-57-951
e-mail: instal@instal-service.pl